

Step by step email client modification for Mac OS X Mail:

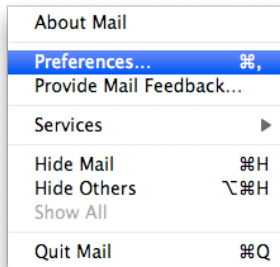
Important note for our users that were on our discontinued dial-in service - be sure your DNS settings do NOT have 206.64.92.5 and/or 206.64.92.2 in them.

(🍏->System Preferences... -> Network see the DNS Server: field)

The correct value(s) are provided by your ISP.

Launch Mac OS X Mail

Select Mail->Preferences menu item



Select the Accounts tab

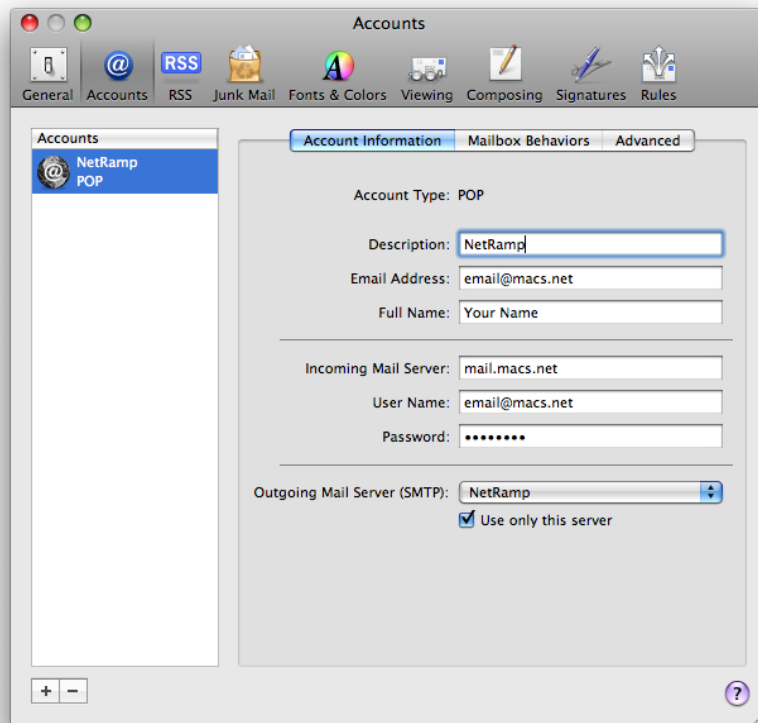
Click on your NetRamp (macs.net) email account in the Accounts pane (the name in your Accounts pane and Outgoing Mail Server (SMTP) popup menu may vary - they are based on the Description field).

Ensure the Email address shows yours.

Ensure the User Name shows your full email address.

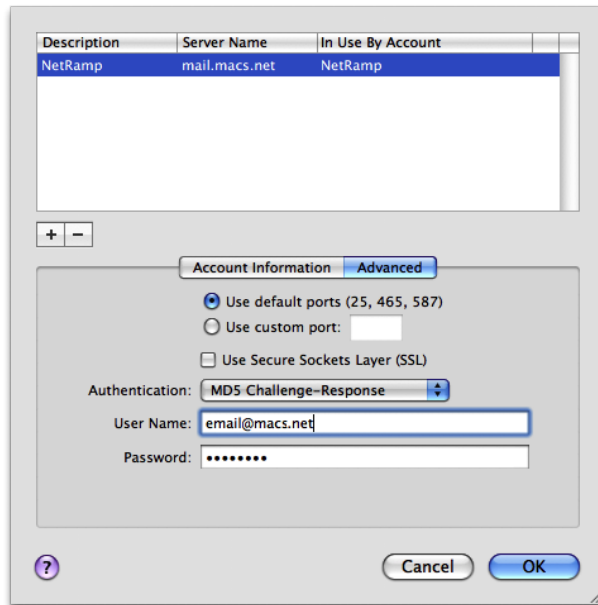
A note about your password:

If your password is less than 8 characters in length, you need to add enough "1"s to make it 8 characters long. For example, "pw" would become "pw111111".



Click the Outgoing Mail Server (SMTP): popup menu

Select "Edit SMTP Server List"
Click the "Advanced" tab
Deselect "Use Secure Sockets Layer (SSL)"
Set Authentication to "MD5 Challenge-Response"
Click "OK"



Close the Accounts window

Overview of the settings:

Accounts -> Account Information

Description: NetRamp
Email Address: email@macs.net
Full Name: Your Name

Incoming Mail Server: mail.macs.net
User Name: email address

Advanced -> Authentication: Password

Outgoing Mail Server (SMTP): Use only this server selected
Edit Server: Use Secure Sockets Layer (SSL) DESELECTED
Authentication: MD5 Challenge-Response

If there is trouble sending mail, it is possible your ISP is blocking port 25. If so do the following:

Select Mail->Preferences menu item
Select the Accounts tab
Click the Outgoing Mail Server (SMTP popup menu)
Select "Edit Server List" (wording may vary)
Select NetRamp in top of window
Click the Advanced button
Click Use custom port radio button
Type "2525" in the field to the right of the button (do not include the quotes)
Click OK
Close the Accounts window